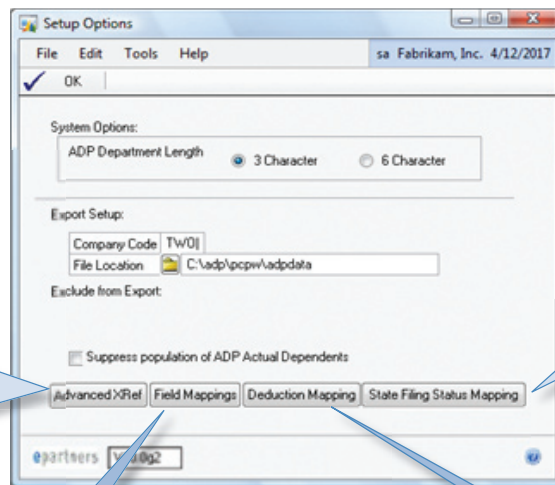




ADP INTEGRATION FOR HR: Payroll Outsourcing

Signature Series' **ADP Integration for HR** product will eliminate the need for duplicate entry of employee, pay rate, and deduction information between Microsoft Dynamics GP HR and ADP's PC Payroll for Windows. ADP Integration for HR reduces keying errors and optimizes the export process by tracking employee changes in Human Resources for subsequent integration with ADP. For organizations with existing ADP just implementing HR, a data import is provided to import and export employee data both in and out of Great Plains Human Resources and ADP.

This product is available for Microsoft Dynamics GP version 9.0 or above and is compatible with ADP PC Payroll for Windows 3.X or above. If the customer has existing ADP employees they wish to populate in Dynamics GP then ADP's ReportSmith Reportwriter is required; the customer should consult with ADP for further information. The client should also be licensed for ADP's Employee Import in order to interface employees exported from Dynamics GP.



Advanced Cross Reference

This window cross references the employee's in both Great Plains and ADP when the employee's ID in the two programs differ from each other. The cross-reference is maintained by the social security because it is unique to an employee record, and is common in both software systems.

State Filing Status Mapping

This window allows the user to map state filing statuses between ADP and Great Plains Human Resources.

Field Mappings

The HR/ADP Field Translation window contains seven scrolling windows to enter data mappings for Great Plains Human Resources as compared to ADP. This window maps or translates codes that are different in Great Plains and ADP. This means if the systems have some codes that are the same; a data-mapping window for that particular translation will not need to be setup.

Deduction Mapping

The HR to ADP Deduction window allows the user to map the Great Plains Human Resources deduction codes to the corresponding ADP deduction code. These codes will be maintained in this window, and need not be entered again unless codes are changed, or new codes are added in either system.



ePartners Incorporated
www.epartnersolutions.com

Success is in the partners you choose.®

www.epartnersolutions.com/signatureseries

E-mail: ss@epartnersolutions.com

Phone: (866) 529 1790



Signature Series Product Information

ADP INTEGRATION FOR HR: Payroll Outsourcing

The **Export Employees to ADP** window will populate automatically when an employee record is saved in Great Plains. This speeds up the export selection process by placing the saved or changed employee records in the window, so all employee records are not exported each time. The Mark All and Unmark All buttons speed the employee selection process. The All button allows for export of all employees.

| Employee Name | Code | Status | Marked |
|----------------|----------|----------|--------------------------|
| Pilar Ackerman | ACKE0001 | Employee | <input type="checkbox"/> |
| Angela Barbaol | BARB0001 | Employee | <input type="checkbox"/> |
| Adam Barr | BARB0001 | Employee | <input type="checkbox"/> |
| Luis Bonifaz | BONL0001 | Employee | <input type="checkbox"/> |
| Nancy Buchanan | BUCH0001 | Employee | <input type="checkbox"/> |
| Jane Clayton | CLAY0001 | Employee | <input type="checkbox"/> |
| Aidan Delaney | DELA0001 | Employee | <input type="checkbox"/> |
| Brenda Diaz | DIAZ0001 | Employee | <input type="checkbox"/> |
| Jenny Doyle | DOYL0001 | Employee | <input type="checkbox"/> |

On the **Import Employees from ADP** window you can define the import file name location, type of data imported and also review the data before it's imported. The imported data file is normally extracted using ADP's ReportSmith and saved to csv file. The window also contains a selection for Employee Data and Deduction Data.

| Employee Name | Code | Marked |
|---------------|------|--------|
|---------------|------|--------|

ePartners Incorporated
www.epartnersolutions.com
Success is in the partners you choose.®

www.epartnersolutions.com/signatureseries
E-mail: ss@epartnersolutions.com
Phone: (866) 529 1790

